



High Quality Particle Board  
& Melamine Faced Chipboard

# Melamine Faced Chipboard

Product Catalog 2024 - 2026

designed by  
**AICA**



# Melamine Faced Chipboard

MFC as favorite surfaced-board material to create all kinds of product.



CONTACT US



Future solution to build cost-efficient furniture and interior decoration with quality



## Chemical & Stain Resistance

When introduced to chemical & stain exposure, MFC showing no marks or discoloration.



## Scratch Resistance

In everyday use, MFC durability can withstand normal usage scratch and impact



## Heat Resistance

MFC also ideal to be used as furniture or decoration with heat source nearby



## Steam Resistance

Using MFC material on a kitchen set or minibar where steam or hot air flow is present without worry

# Melamine Faced Chipboard

## MFC & MFF Product Availability



		READY STOCK	CUSTOM ORDER
SIZE		1,220 x 2,440 mm	
CORE		PB E2, E1, CARB P2, E0, EOS	MDF E2, E1, CARB P2, HMR
THICKNESS (mm)		6 / 9 / 12 / 15 / 18 / 20 / 25 / 30	By Request with Min Quantity
DESIGN		Solid Color Collection	Premium, Stone, Wood & Non Wood Collection
EMBOSS		-	Alutex (Orange Faced), Soft Alutex (Sand), Flat (Smooth), Woodgrain (Rainy)
FACE		Double	Different Design/Color/Emboss

## MFC & MFF Product Physical Properties

POSITION	CHECKPOINT	METHOD	STANDARD		
<b>1. MFC Substrate Properties (Particle Board)</b>					
CORE	Density	JIS A 5908 : 2022	0.40 - 0.90 (gr/cm <sup>3</sup> )		
	Moisture Content	JIS A 5908 : 2022	5 - 13 (%)		
	MOR	JIS A 5908 : 2022	Non JIS Min 12.0 (N/mm <sup>2</sup> )	JIS Min 13.0 (N/mm <sup>2</sup> )	
	Internal Bond	JIS A 5908 : 2022	Min 0.2 (N/mm <sup>2</sup> )		
	Screw Holding Face (Thickness 15mm up)	JIS A 5908 : 2022	Min 400 (N)		
	Formaldehyde Emmission (JIS)	JIS A 1460 : 2021	<b>Average</b>	<b>Maximum</b>	
			E2 E1 F** 1.5 (mg/l) or less E0 F*** 0.5 (mg/l) or less EOS F**** 0.3 (mg/l) or less	E2 E1 F** 2.1 (mg/l) or less E0 F*** 0.7 (mg/l) or less EOS F**** 0.4 (mg/l) or less	
	Formaldehyde Emission (CARB US-EPA)	JIS A 1460 : 2021 Correlation	CARB Phase 2 - EPA : 0.09 (ppm) or less		
CARB Phase 2 - EPA non JIS : 0.09 (ppm) or less					
<b>2. MFC Surface Properties</b>					
TOP & BOTTOM	Chemical Resistance	5% Acetic Acid and 1% Sodium Carbonate	No discoloration / any visible change after 24 hours		
	Scratch Resistance	Diamond Needle Scratches 0.75 N	No marks / any visible change		
	Heat Resistance	At 180°C for 10 minutes	No marks / no discoloration		
	Crack Resistance	In Oven at 70°C for 24 hours	No crack observe		
	Steam Resistance	Steam of Boiling Water for 1 hour	No swelling / any visible change		
	Stain Resistance	Coffee, Tea, Soy Sauce, Sauce, Milk & Honey	No discoloration / any visible change		

Surface Emboss

**Alutex**

**N74**

Surface Emboss

**Flat**

**G**



AMF 013  
Light Beech



AMF 007  
Dark Walnut



AMF BR41  
Dark Khaki

Solid Color



AMF 015  
Sam Applewood

AMF W10  
Cotton White

Solid Color

Surface Emboss

**Sand**

**N74**

Surface Emboss

**Stone**

**S83**



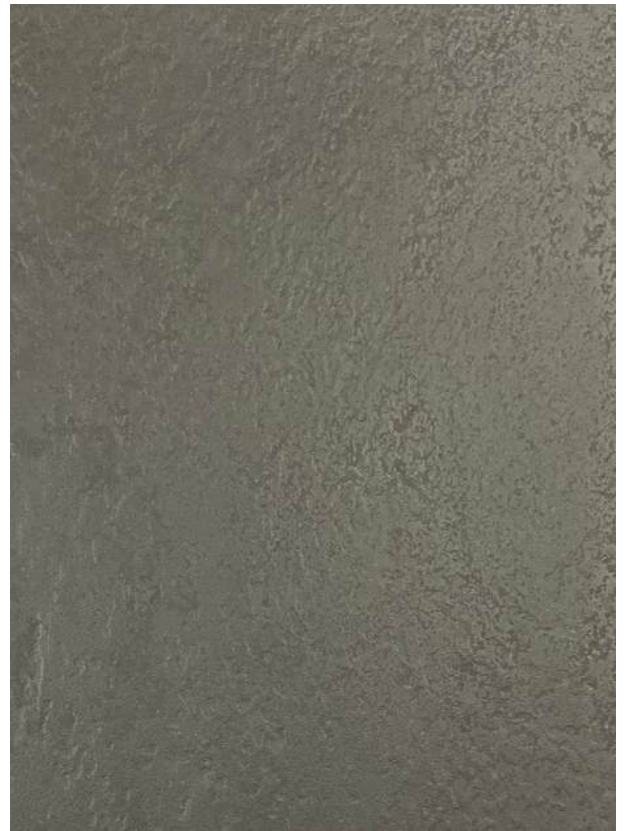
AMF 004  
Vermont Maple



AMF 003  
Yellow Oak

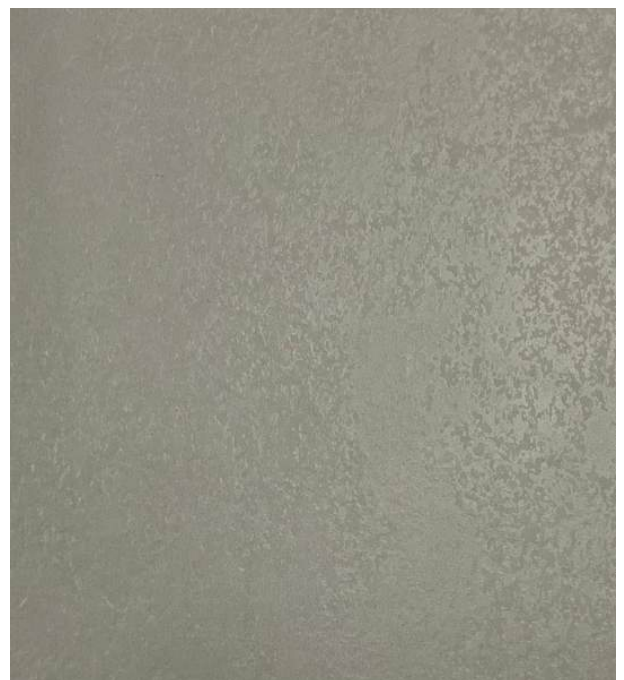


AMF 3068  
Light Elmyra



AMF G21  
Truffle Grey

Solid Color



AMF G23  
Cloudy Grey

Solid Color

Surface Emboss

**Timber**

**Y33**

Surface Emboss

**Fabric**

**Y35**



AMF 018  
Molala Walnut



AMF 001  
Pastel Oak



AMF BR40  
Canadian Maple

Solid Color



AMF B30  
Rustic Black

Solid Color



AMF G20  
Steel Grey

Solid Color

Surface Emboss

**Rainy**

**S98**

Surface Emboss

**Woody**

**S62**



AMF 008  
White Cedar



AMF 3048  
Light Japanese Oak



AMF G22  
Vintage Grey

Solid Color



AMF 3080  
Yellow Adamson Oak



AMF 3082  
Medium Lintang Teak

# WHAT IS MFC?

Melamine Faced Chipboard (MFC) is made of particle board that laminated with melamine paper. MFC is considered as an environmentally friendly because of the use of particle board but aesthetically versatile in use since the decorative melamine available in many collections to serve various projects. Including great variation in natural wood tone colors and textures to choose from.



## PT. AICA Indonesia

### Head office

Jl. Ir H. Juanda 318,  
Bekasi 17113, indonesia  
P. 021 880 1391  
F. 021 880 2807  
E. [aica.indonesia@aica.co.id](mailto:aica.indonesia@aica.co.id)  
W. [www.aica.co.id](http://www.aica.co.id)

### Marketing Office

Trinity Tower, 15th floor  
Jl. H. R. Rasuna Said  
Blok IIB, Karet Kuningan,  
Jakarta 12940, Indonesia  
P. 021 2526 899  
E. [info@aica.co.id](mailto:info@aica.co.id)

## PT. Marga Bharata

(Sole Distributor)

Jl. Pengeran Jayakarta, No. 101/A2  
Mangga Dua Selatan,  
Jakarta Pusat 10730 - Indonesia  
P. 021 6019838  
F. 021 6295312  
E. [info@margabharata.com](mailto:info@margabharata.com)